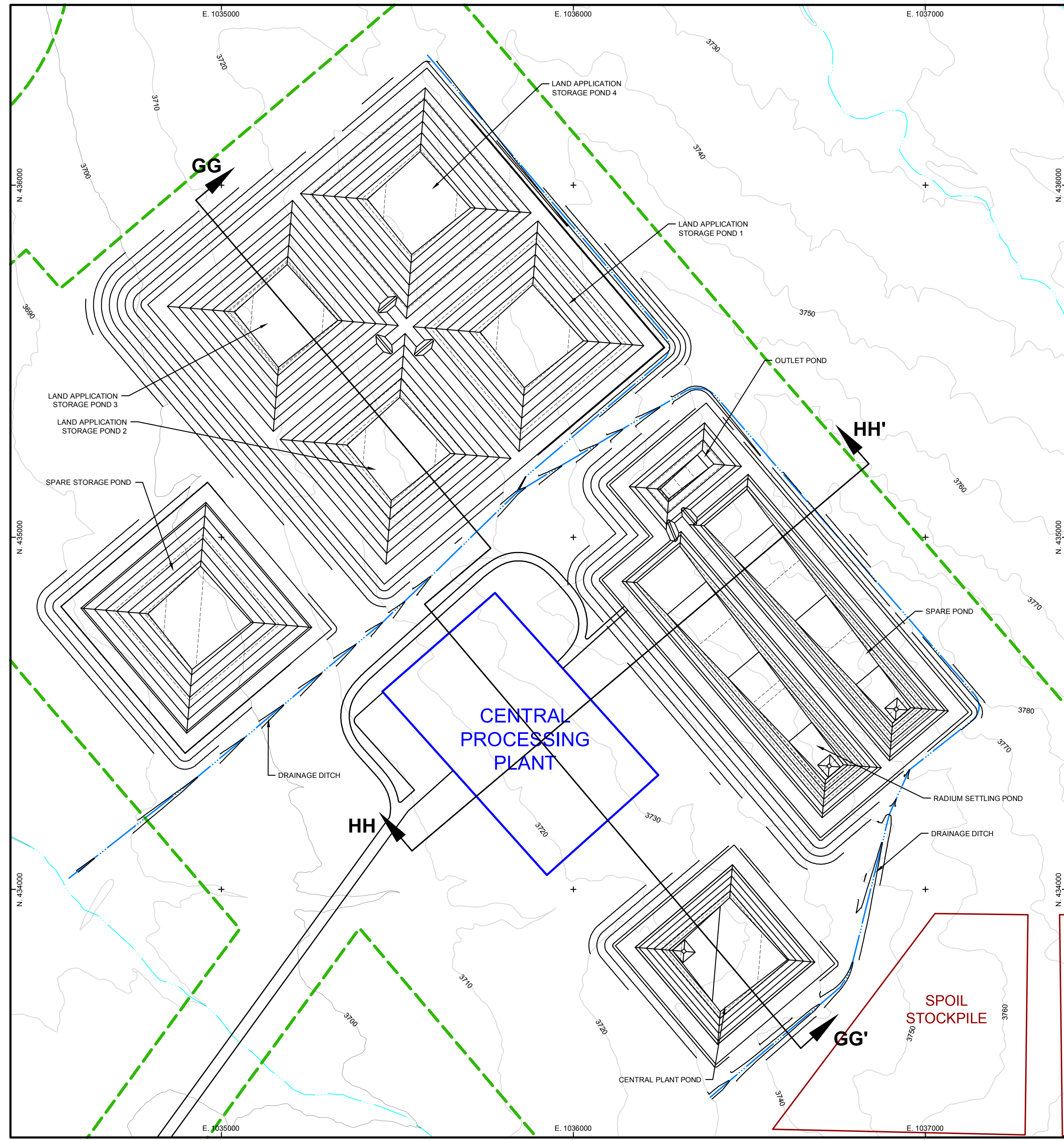
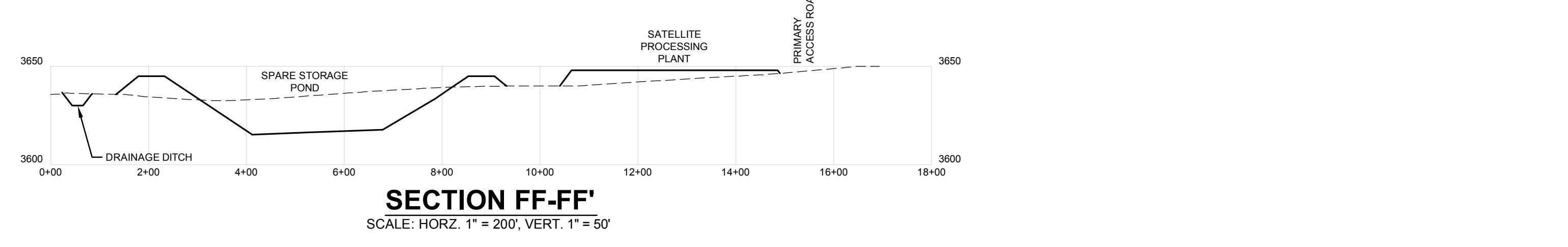
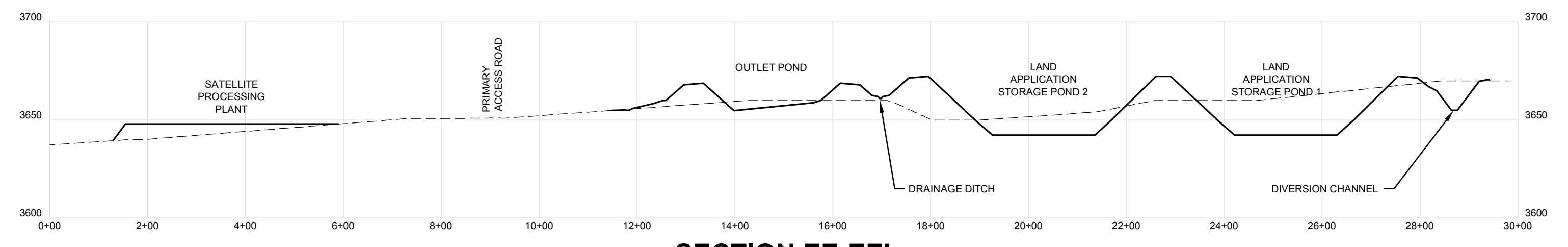


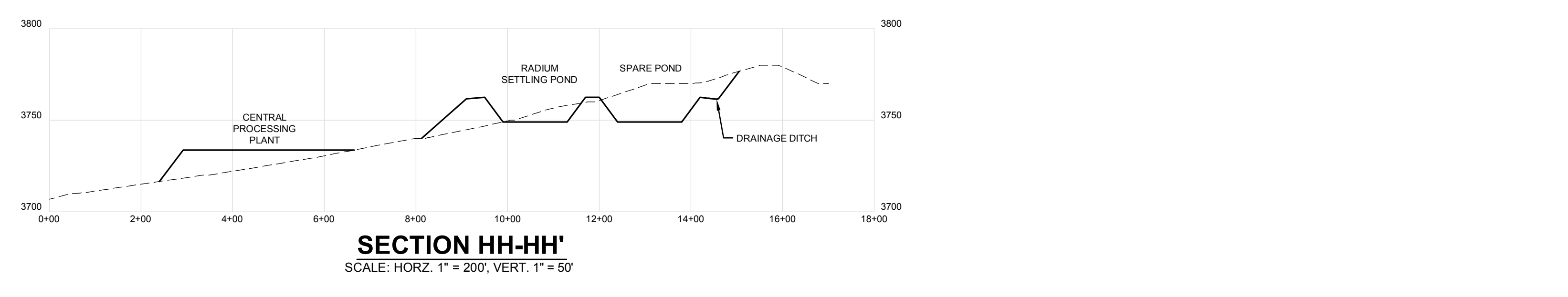
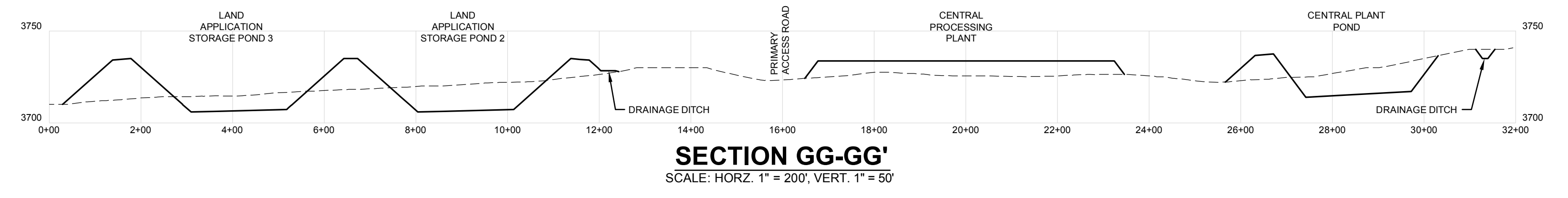
SATELLITE FACILITY AREA PLAN VIEW

SCALE: 1" = 200'
C.I. = VARIES



CPP AREA PLAN VIEW

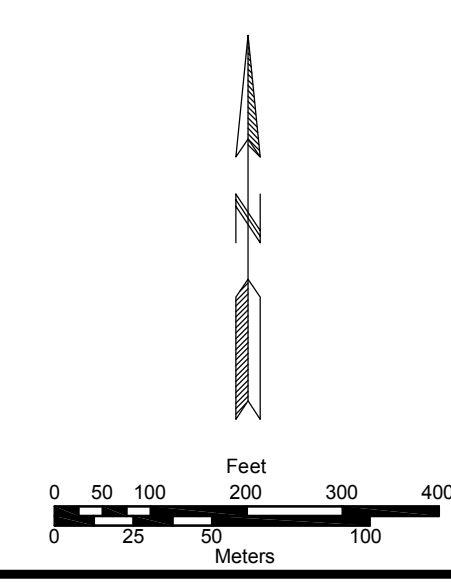
SCALE: 1" = 200'
C.I. = VARIES



LEGEND

	PROPOSED AFFECTED AREA BOUNDARY		PREMINE/POST MINE GROUND
	PROPOSED PRIMARY ACCESS ROAD		CONSTRUCTED GROUND SURFACE
	EPHEMERAL STREAM CHANNEL		
	PROPOSED DIVERSION		
	PROPOSED DRAINAGE DITCH		

This plate is provided to fulfill the requirements of ARSD 74-29-02-04(3)



CONSULTANT		REVISIONS	
#	DRAWN	CHECKED	APPROVED DATE
SIGNATURE OF PREPARER		DATE	
Dale E. Brown		3 December 2012	
CHECK SCALES		DATE	
If this list shows the measure 1 inch this map is not at its original scale		3 December 2012	
PROJECT	DRAWN	CAD FILE	DATE
Dewey-Burdock Project	Dale E. Brown	K:\PowerTech\11270\DWGS\SEC_LANDAPP.dwg	3 December 2012
PROJECT		DATE	
NAD 21, South Dakota State Plane South (feet)		3 December 2012	

PowerTech (USA) Inc.
Plate 5.3-16
Facility Cross Sections
Land Application Option
Dewey-Burdock Project