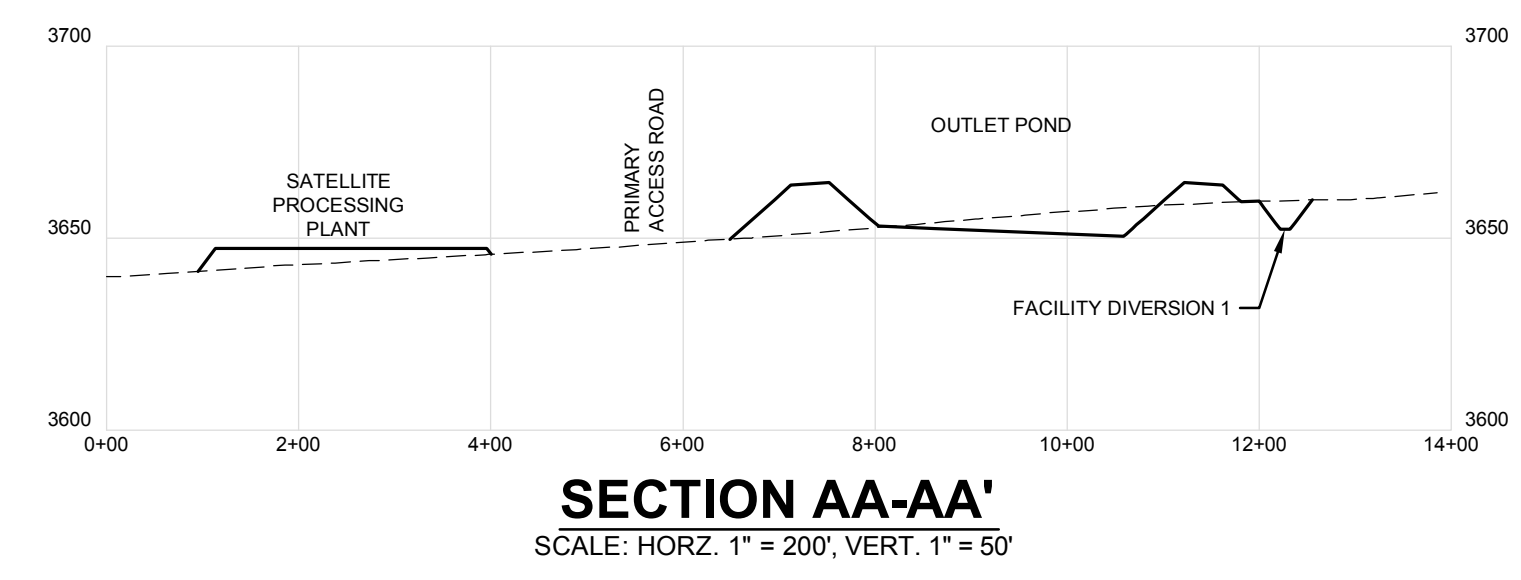
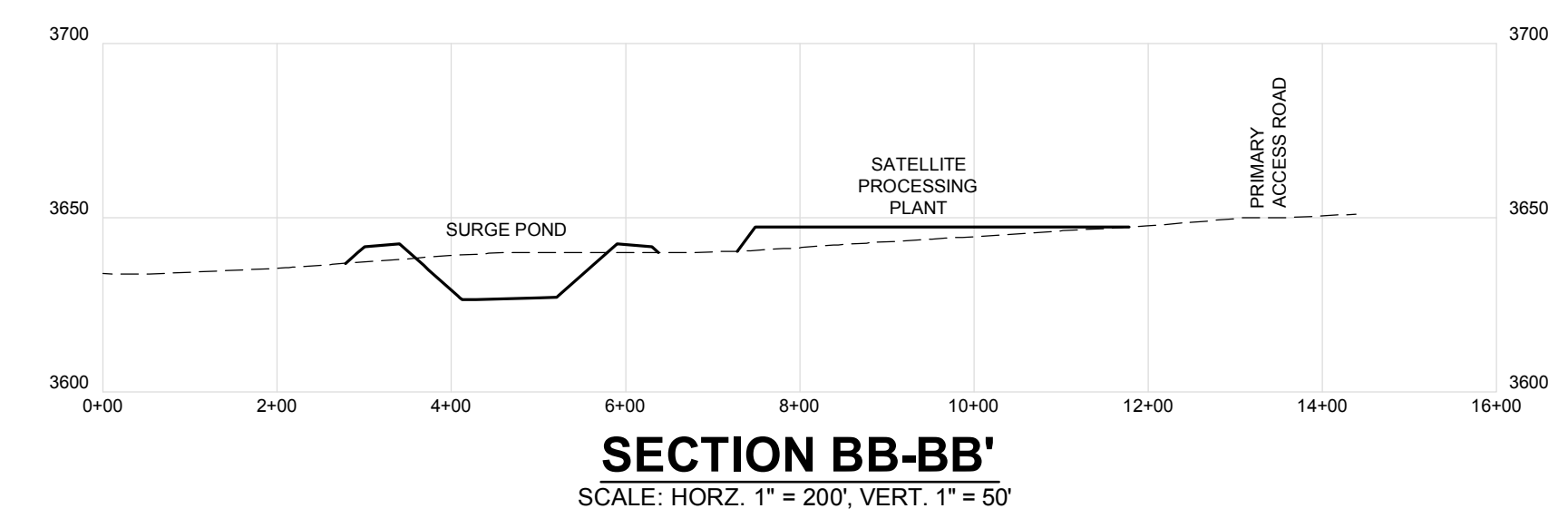


**SATELLITE FACILITY AREA PLAN VIEW**

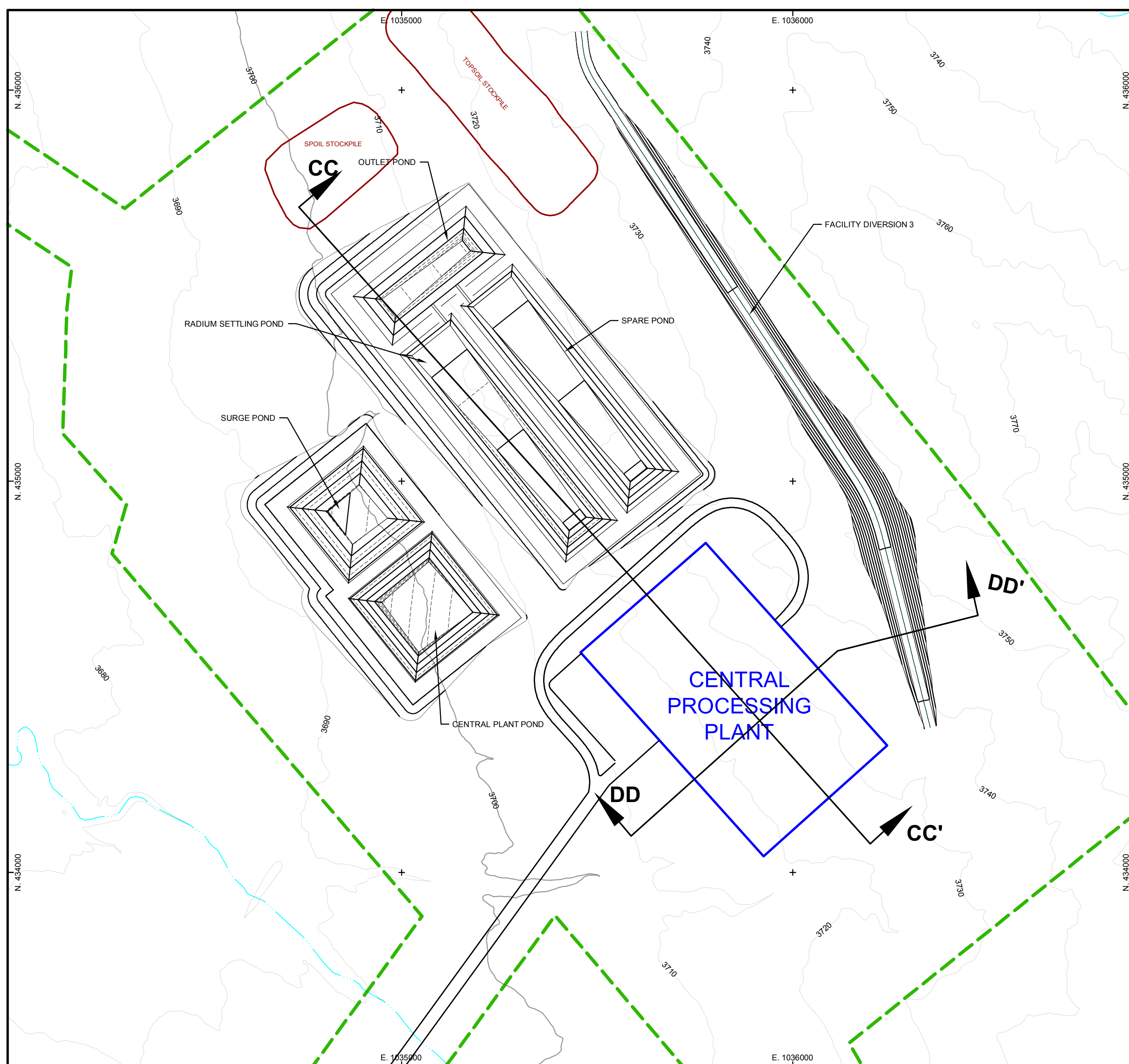
SCALE: 1" = 200'  
C.I. = VARIES



**SECTION AA-AA'**  
SCALE: HORZ. 1" = 200', VERT. 1" = 50'

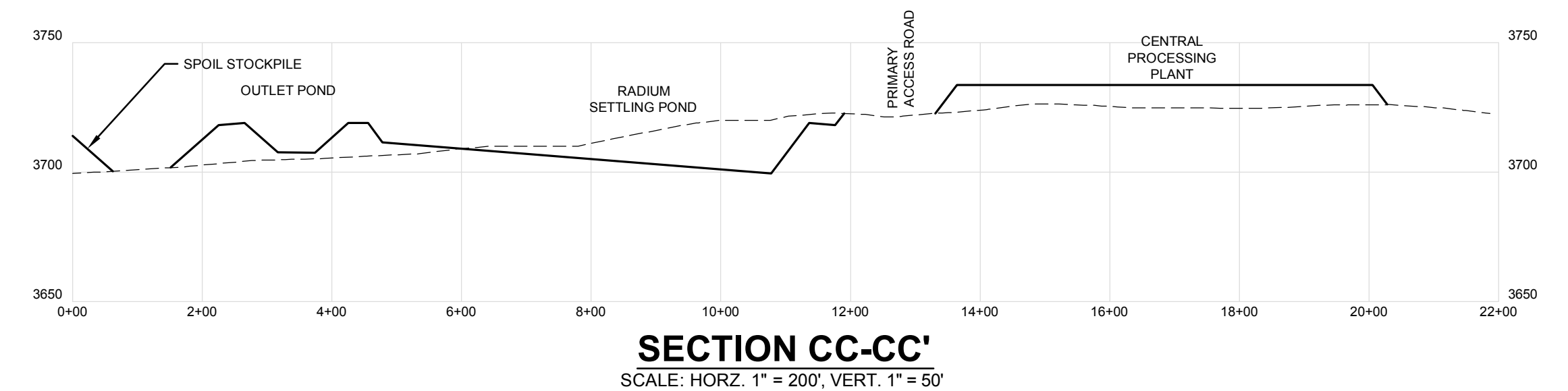


**SECTION BB-BB'**  
SCALE: HORZ. 1" = 200', VERT. 1" = 50'

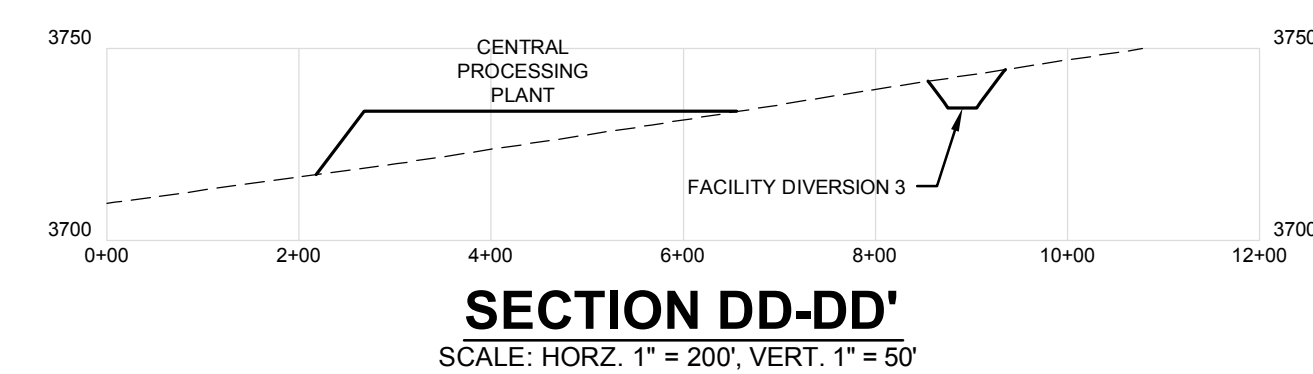


**CPP AREA PLAN VIEW**

SCALE: 1" = 200'  
C.I. = VARIES



**SECTION CC-CC'**  
SCALE: HORZ. 1" = 200', VERT. 1" = 50'

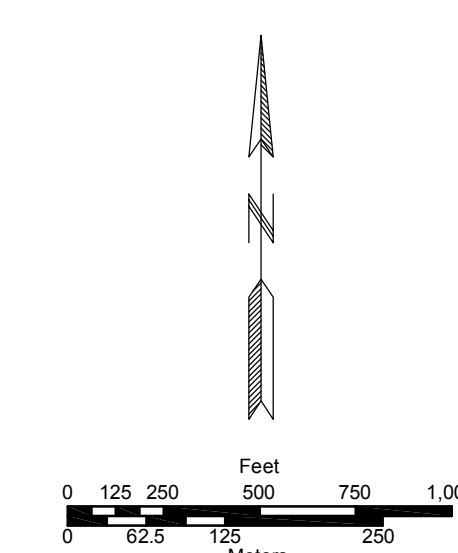


**SECTION DD-DD'**  
SCALE: HORZ. 1" = 200', VERT. 1" = 50'

**LEGEND**

- PROPOSED AFFECTED AREA BOUNDARY
- PROPOSED PRIMARY ACCESS ROAD
- EPHEMERAL STREAM CHANNEL
- PREMINE/POSTMINE GROUND
- CONSTRUCTED GROUND SURFACE

This plate is provided to fulfill the requirements of ARSD 74-29-02 04(3).



CONSULTANT <b>WVC ENGINEERING</b>	REVISIONS			
	#	DRAWN	CHECKED	APPROVED DATE
DATE	SIGNATURE OF PREPARED			
CHECK SCALES	DATE			
DATE: 3 December 2012	DATE: 3 December 2012			
DRAWN: DALE E. BROWN	DATE: 3 December 2012			
PREPARED: DALE E. BROWN	DATE: 3 December 2012			
CAD FILE: K:\PowerTech\11270\DWGS\A5EC_DDW.dwg	DATE: 3 December 2012			

**POWERTECH (USA) INC.**  
**Plate 5.3-15**  
**Facility Cross Sections**  
**Deep Disposal Well Option**

Dewey-Burdock Project

CONTRACT: NAD 21, South Dakota State Plane South (feet)

K:\PowerTech\11270\DWGS\A5EC\_DDW.dwg