

APPENDIX 3.6-B

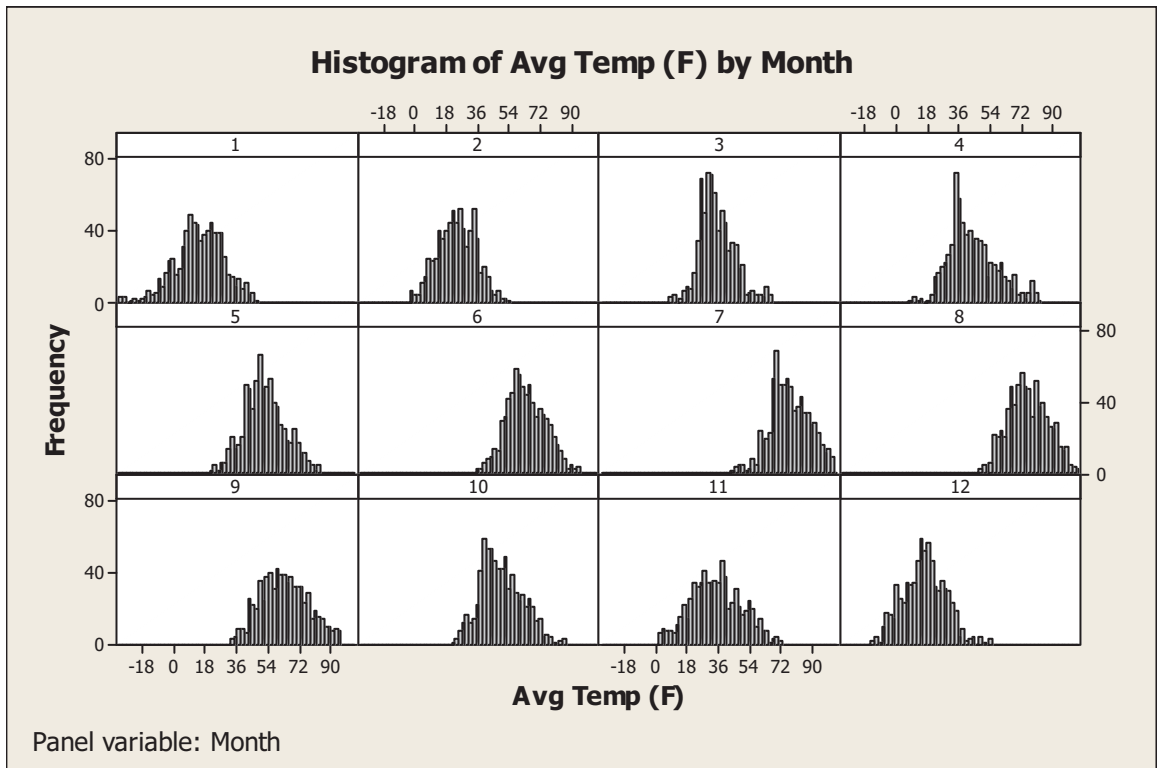
Statistical Reports for Dewey-Burdock Meteorological Site

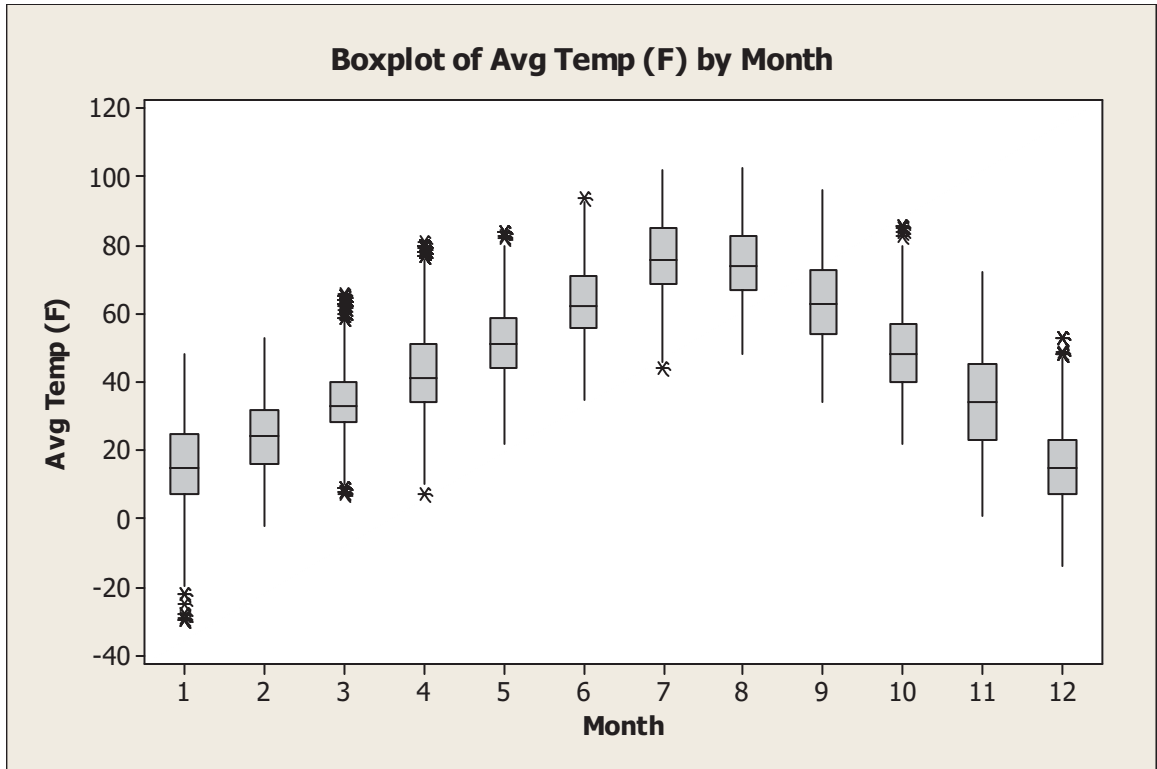
This page intentionally left blank

APPENDIX 3.6-B STATISTICAL REPORTS FOR DEWEY-BURDOCK METEOROLOGICAL SITE

Descriptive Statistics: Avg Temp (F)

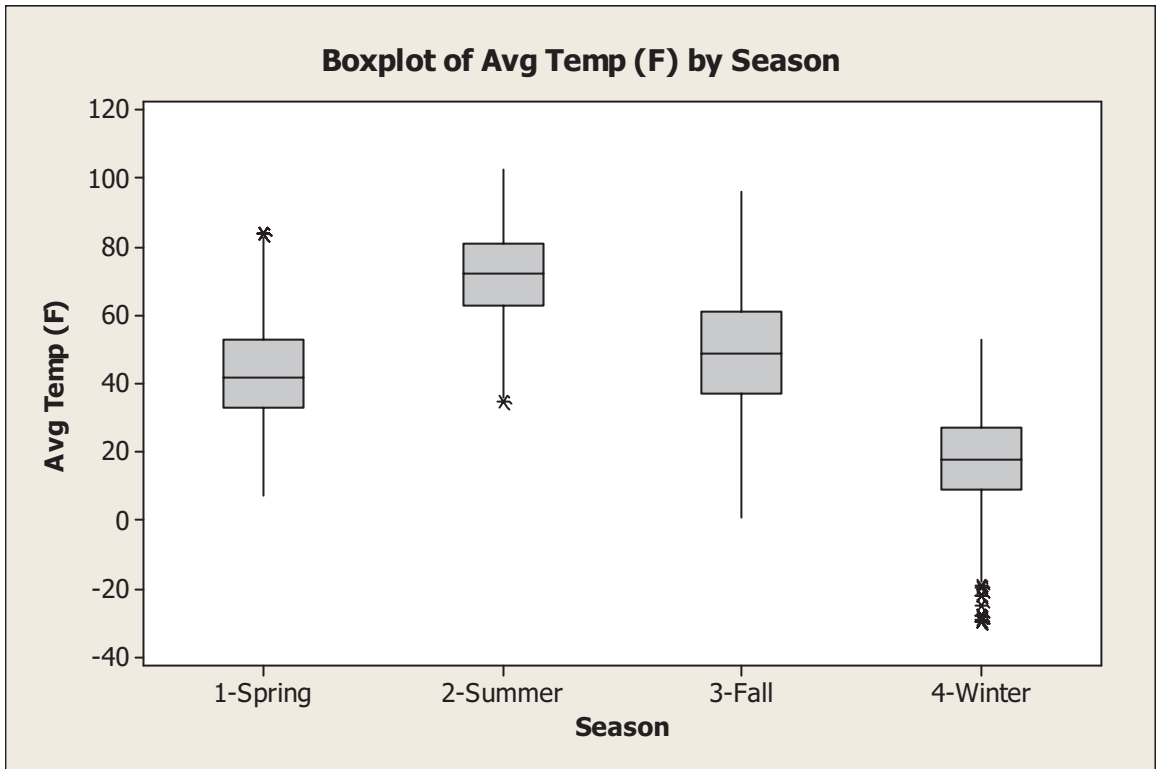
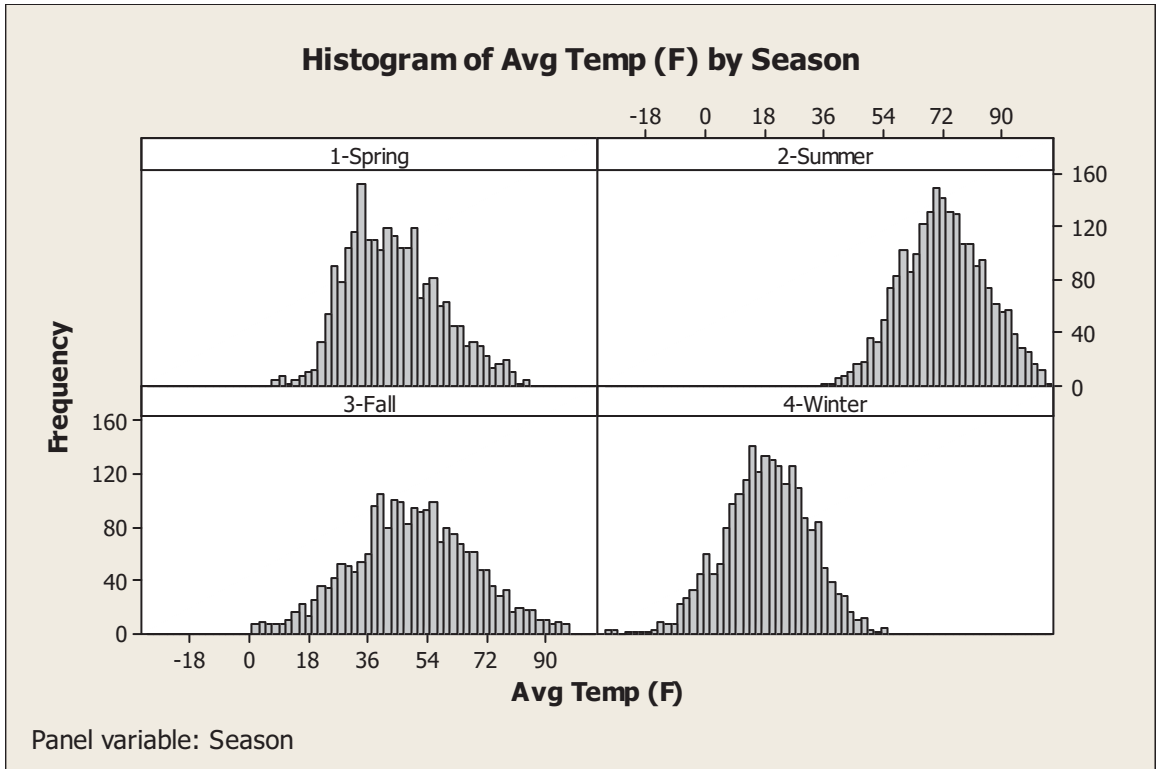
Variable	Month	N	N*	Mean	StDev	Minimum	Q1	Median	Q3	Maximum
Avg Temp (F)	1	744	0	14.792	13.859	-30.000	7.000	15.000	25.000	48.000
	2	696	0	23.520	10.861	-2.000	16.000	24.000	32.000	53.000
	3	720	0	34.550	10.040	7.000	28.000	33.000	40.000	66.000
	4	720	0	43.082	13.914	7.000	34.000	41.000	51.000	81.000
	5	744	0	52.173	11.654	22.000	44.000	51.000	59.000	84.000
	6	720	0	63.306	10.914	35.000	56.000	62.000	71.000	94.000
	7	744	0	76.858	11.231	44.000	69.000	76.000	85.000	102.000
	8	744	0	75.160	11.226	48.000	67.000	74.000	83.000	103.000
	9	720	0	63.747	13.787	34.000	54.000	63.000	73.000	96.000
	10	744	0	49.210	12.055	22.000	40.000	48.000	57.000	86.000
	11	720	0	34.061	14.761	1.000	23.000	34.000	45.000	72.000
	12	744	0	15.073	12.085	-14.000	7.000	15.000	23.000	53.000





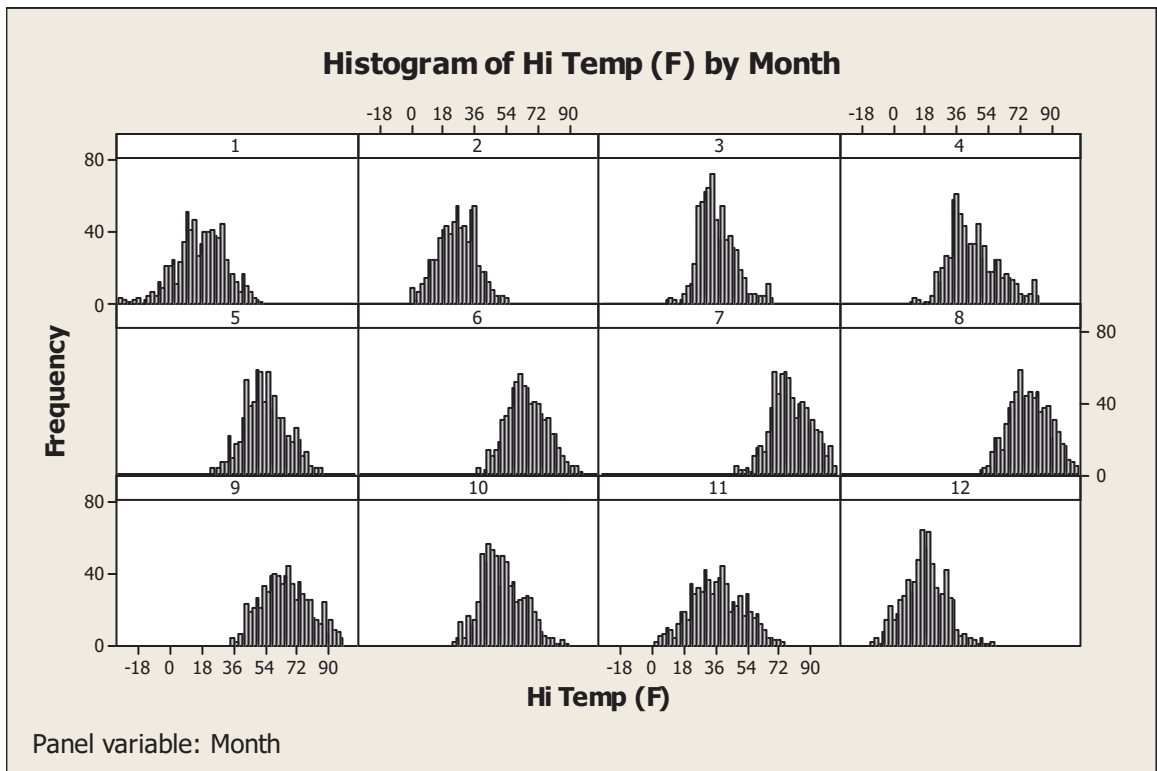
Descriptive Statistics: Avg Temp (F)

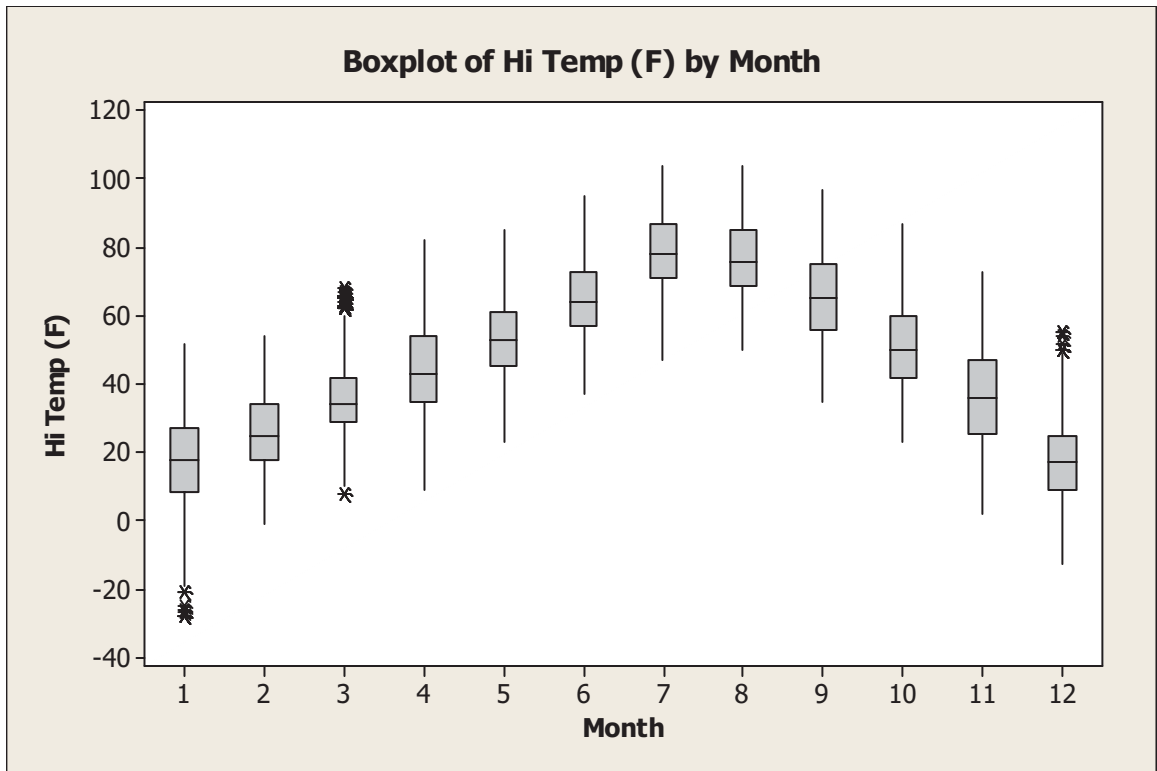
Variable	Season	N	N*	Mean	StDev	Minimum	Q1	Median	Q3	Maximum
Avg Temp (F)	1-Spring	2184	0	43.366	13.975	7.000	33.000	42.000	53.000	84.000
	2-Summer	2208	0	71.866	12.636	35.000	63.000	72.000	81.000	103.000
	3-Fall	2184	0	49.008	18.144	1.000	37.000	49.000	61.000	96.000
	4-Winter	2184	0	17.669	12.987	-30.000	9.000	18.000	27.000	53.000



Descriptive Statistics: Hi Temp (F)

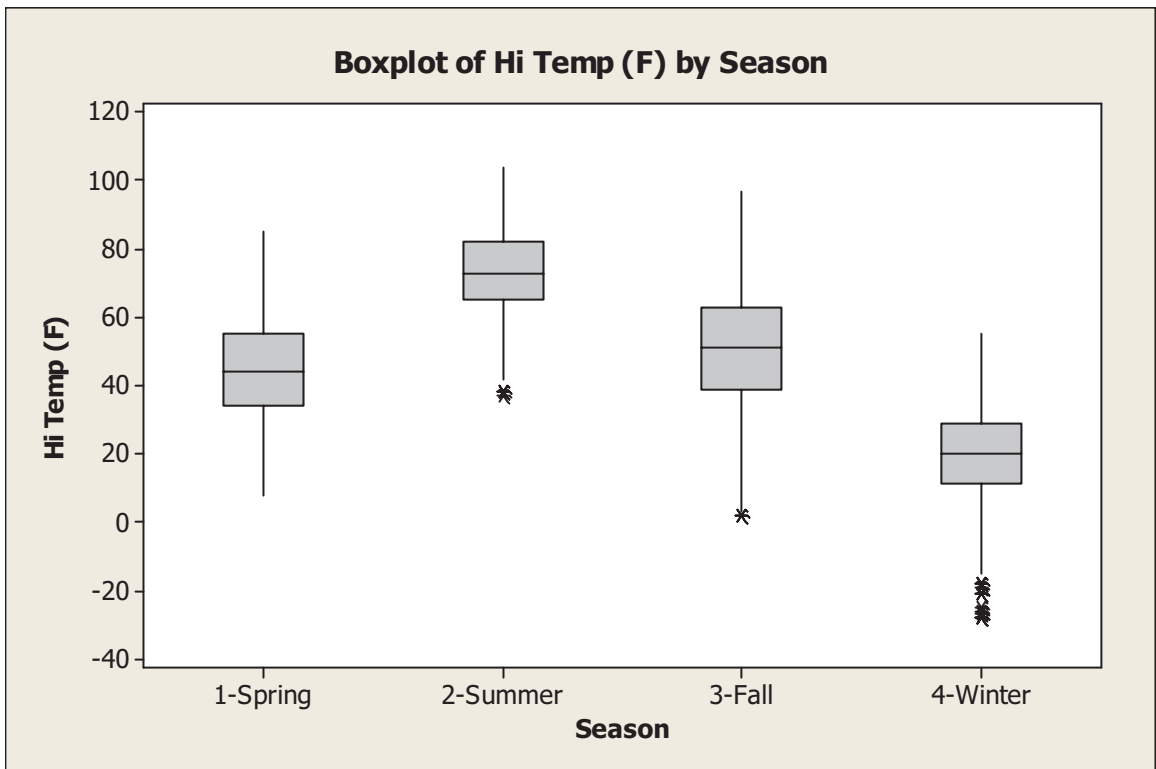
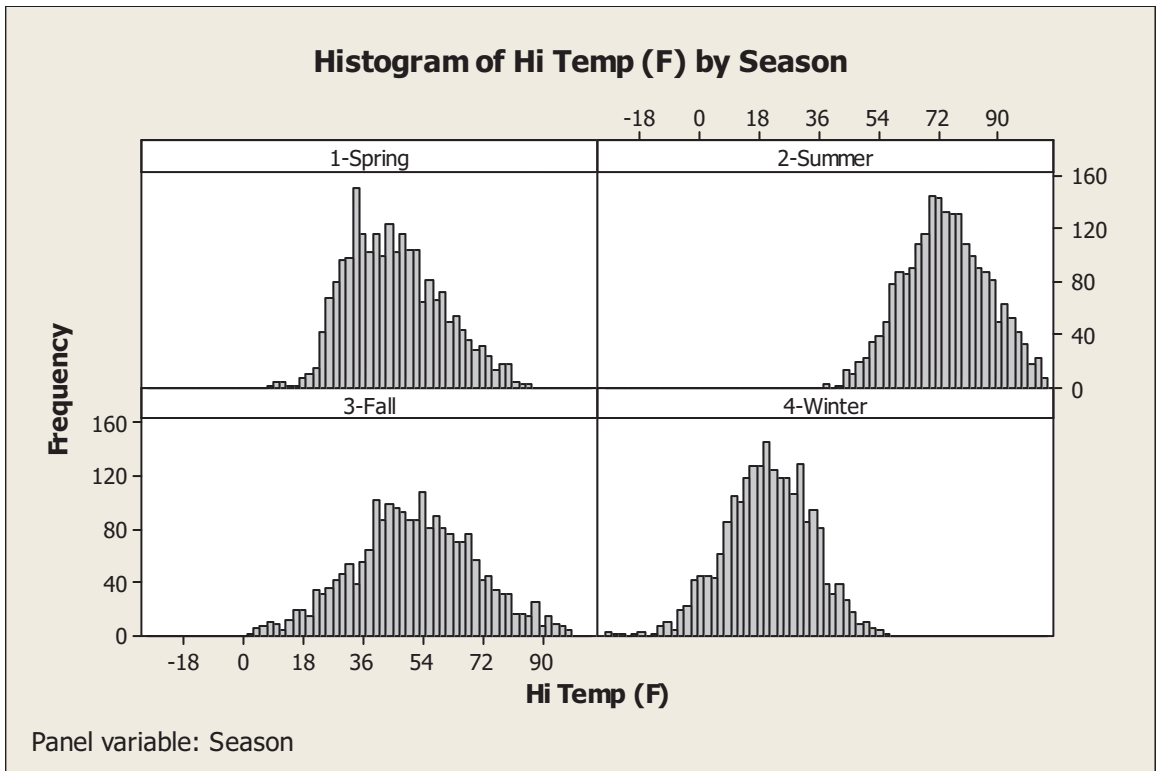
Variable	Month	N	N*	Mean	StDev	Minimum	Q1	Median	Q3	Maximum
Hi Temp (F)	1	744	0	17.176	14.043	-28.000	8.250	18.000	27.000	52.000
	2	696	0	25.307	10.827	-1.000	18.000	25.000	34.000	54.000
	3	720	0	36.100	10.286	8.000	29.000	34.000	42.000	68.000
	4	720	0	44.954	14.008	9.000	35.000	43.000	54.000	82.000
	5	744	0	53.663	11.834	23.000	45.000	53.000	61.000	85.000
	6	720	0	65.026	10.932	37.000	57.000	64.000	73.000	95.000
	7	744	0	78.593	11.209	47.000	71.000	78.000	87.000	104.000
	8	744	0	76.902	11.387	50.000	69.000	76.000	85.000	104.000
	9	720	0	65.635	13.798	35.000	56.000	65.000	75.000	97.000
	10	744	0	51.003	12.020	23.000	42.000	50.000	60.000	87.000
	11	720	0	36.133	14.917	2.000	25.250	36.000	47.000	73.000
	12	744	0	17.262	11.831	-13.000	9.000	17.000	25.000	55.000





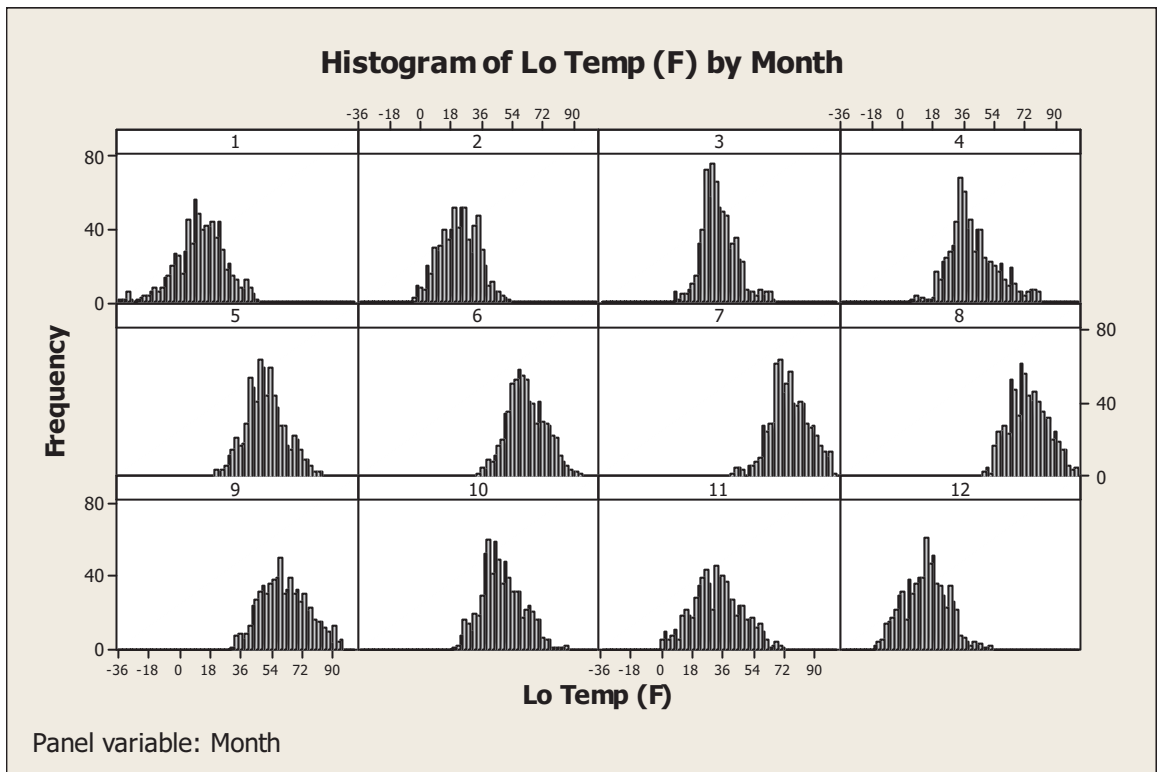
Descriptive Statistics: Hi Temp (F)

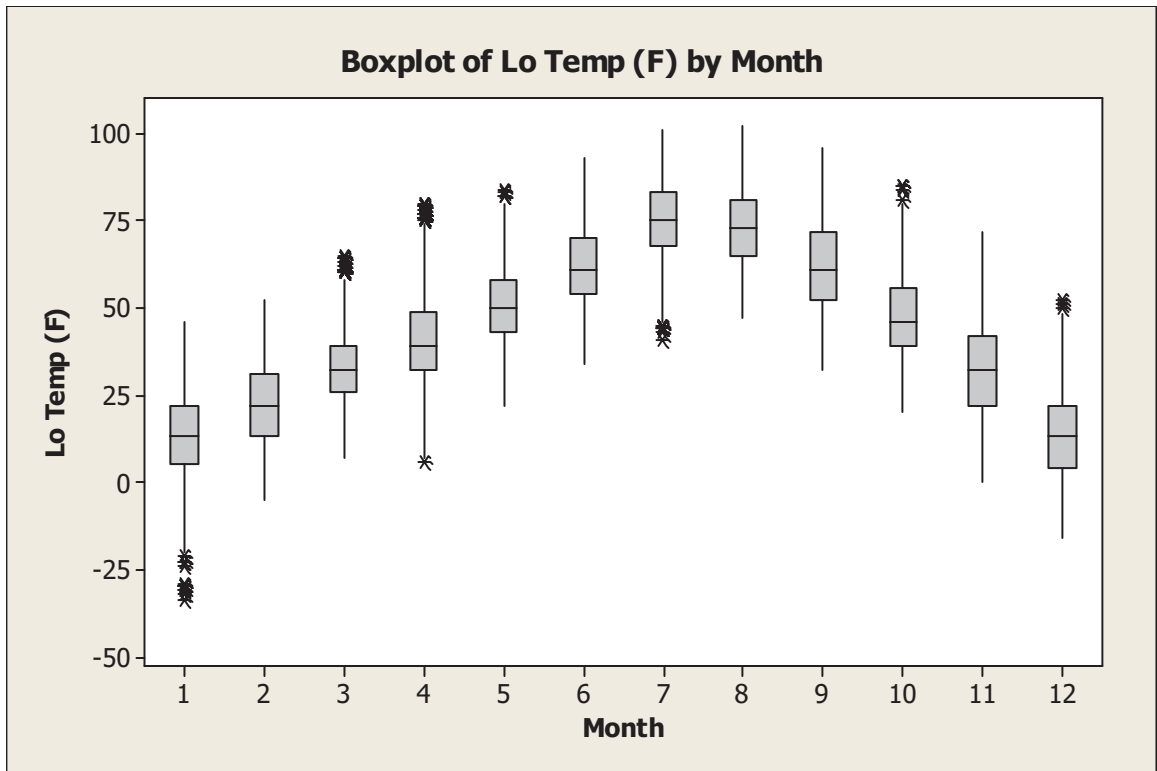
Variable	Season	N	N*	Mean	StDev	Minimum	Q1	Median	Q3
Maximum									
Hi Temp (F)	1-Spring	2184	0	45.002	14.101	8.000	34.000	44.000	55.000
	2-Summer	2208	0	73.599	12.686	37.000	65.000	73.000	82.000
	3-Fall	2184	0	50.924	18.130	2.000	39.000	51.000	63.000
	4-Winter	2184	0	19.797	12.896	-28.000	11.000	20.000	29.000



Descriptive Statistics: Lo Temp (F)

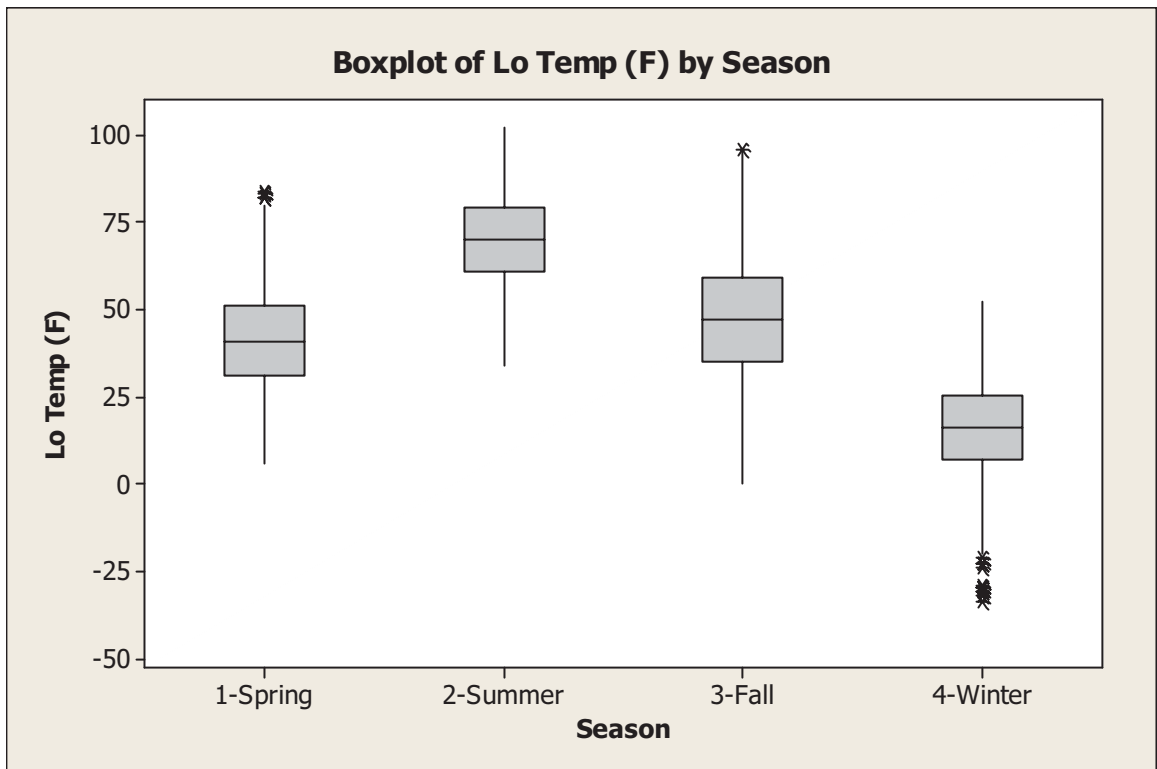
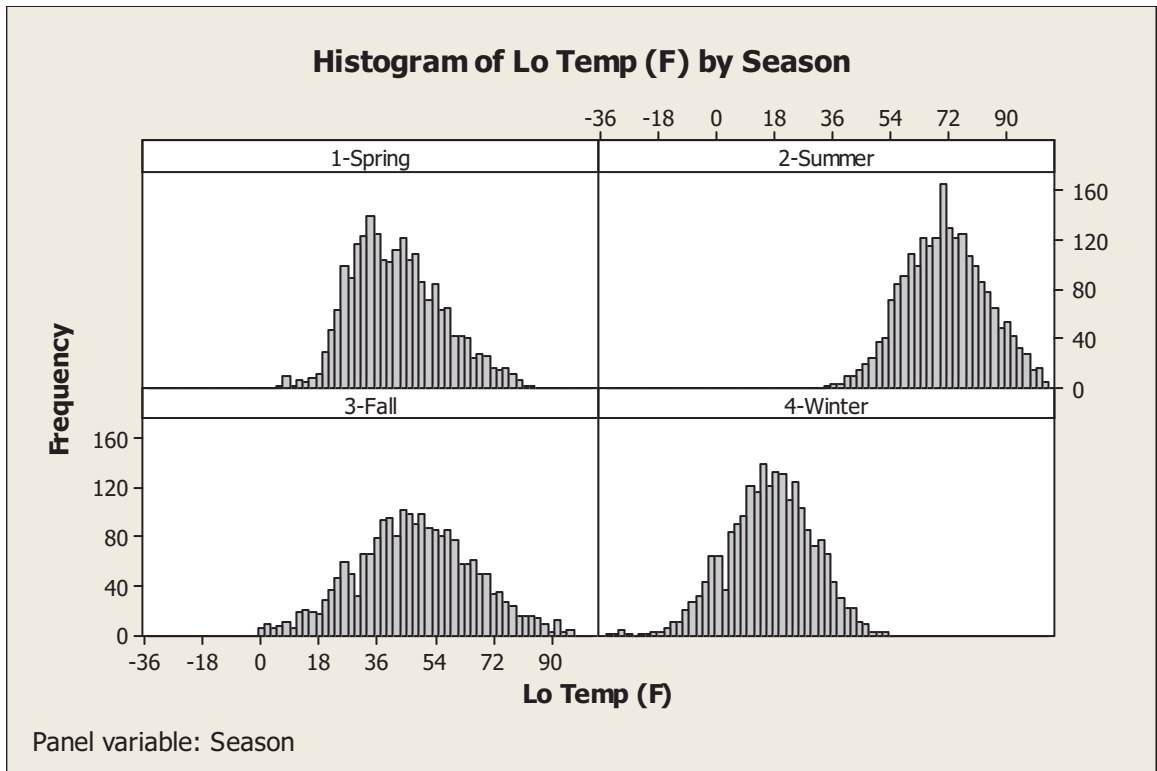
Variable	Month	N	N*	Mean	StDev	Minimum	Q1	Median	Q3	Maximum
Lo Temp (F)	1	744	0	12.538	13.869	-34.000	5.000	13.000	22.000	46.000
	2	696	0	21.797	11.032	-5.000	13.250	22.000	31.000	52.000
	3	720	0	32.993	9.890	7.000	26.000	32.000	39.000	65.000
	4	720	0	41.326	13.840	6.000	32.000	39.000	49.000	80.000
	5	744	0	50.719	11.503	22.000	43.000	50.000	58.000	84.000
	6	720	0	61.635	10.928	34.000	54.000	61.000	70.000	93.000
	7	744	0	75.144	11.330	41.000	68.000	75.000	83.000	101.000
	8	744	0	73.449	11.173	47.000	65.000	73.000	81.000	102.000
	9	720	0	61.931	13.775	32.000	52.000	61.000	72.000	96.000
	10	744	0	47.539	12.074	20.000	39.000	46.000	55.750	85.000
	11	720	0	32.004	14.599	0.000	22.000	32.000	42.000	72.000
	12	744	0	12.957	12.541	-16.000	4.000	13.000	22.000	52.000





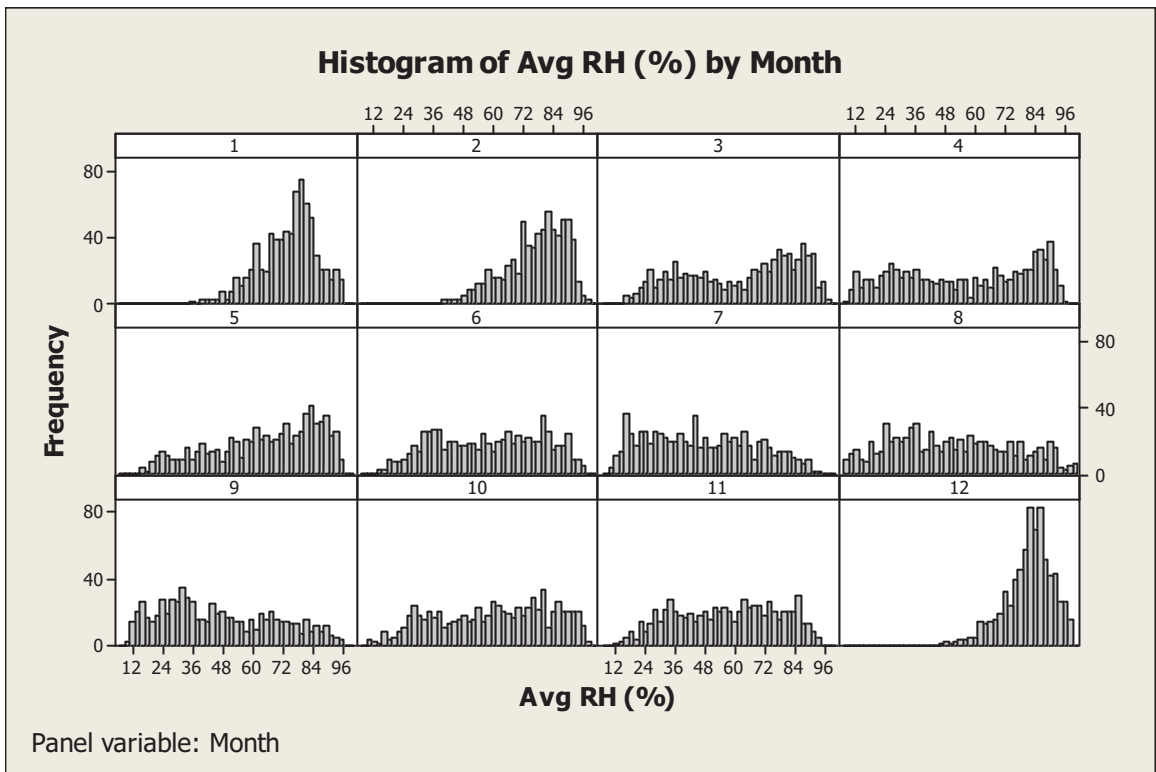
Descriptive Statistics: Lo Temp (F)

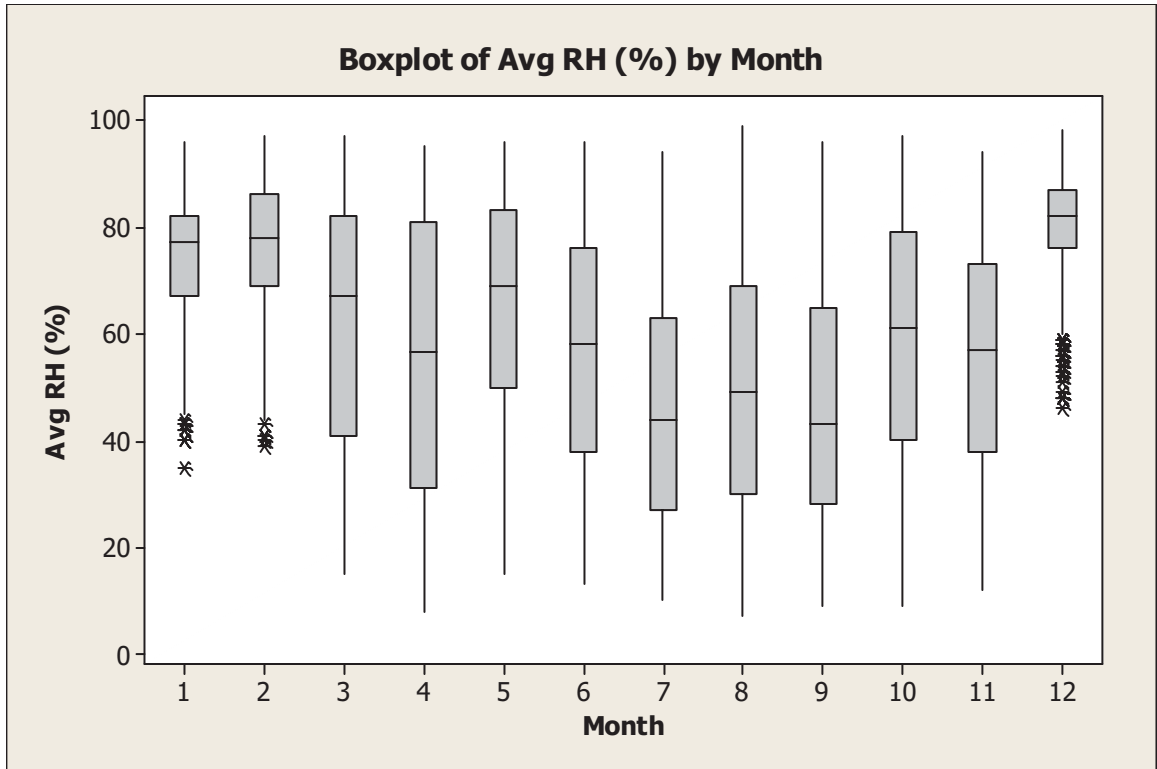
Variable	Season	N	N*	Mean	StDev	Minimum	Q1	Median	Q3
Maximum									
Lo Temp (F)	1-Spring	2184	0	41.779	13.896	6.000	31.000	41.000	51.000
84.000									
	2-Summer	2208	0	70.168	12.644	34.000	61.000	70.000	79.000
102.000									
	3-Fall	2184	0	47.162	18.168	0.000	35.000	47.000	59.000
96.000									
	4-Winter	2184	0	15.631	13.250	-34.000	7.000	16.000	25.000
52.000									



Descriptive Statistics: Avg RH (%)

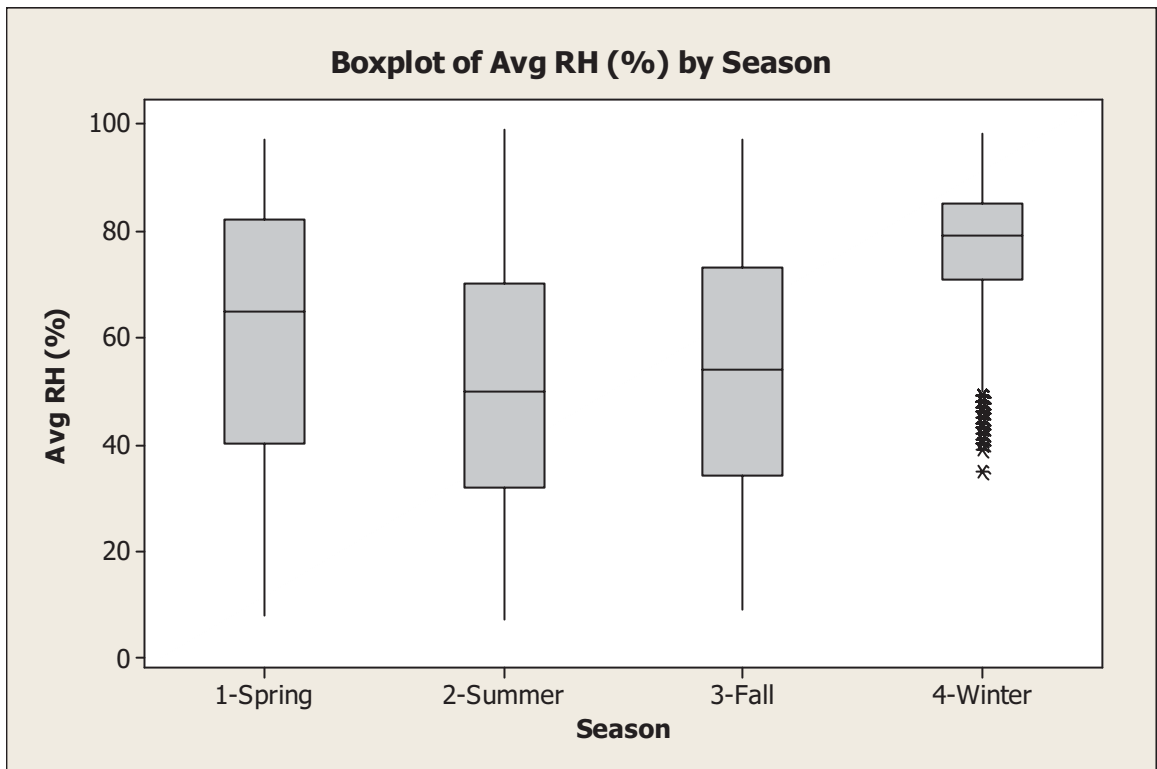
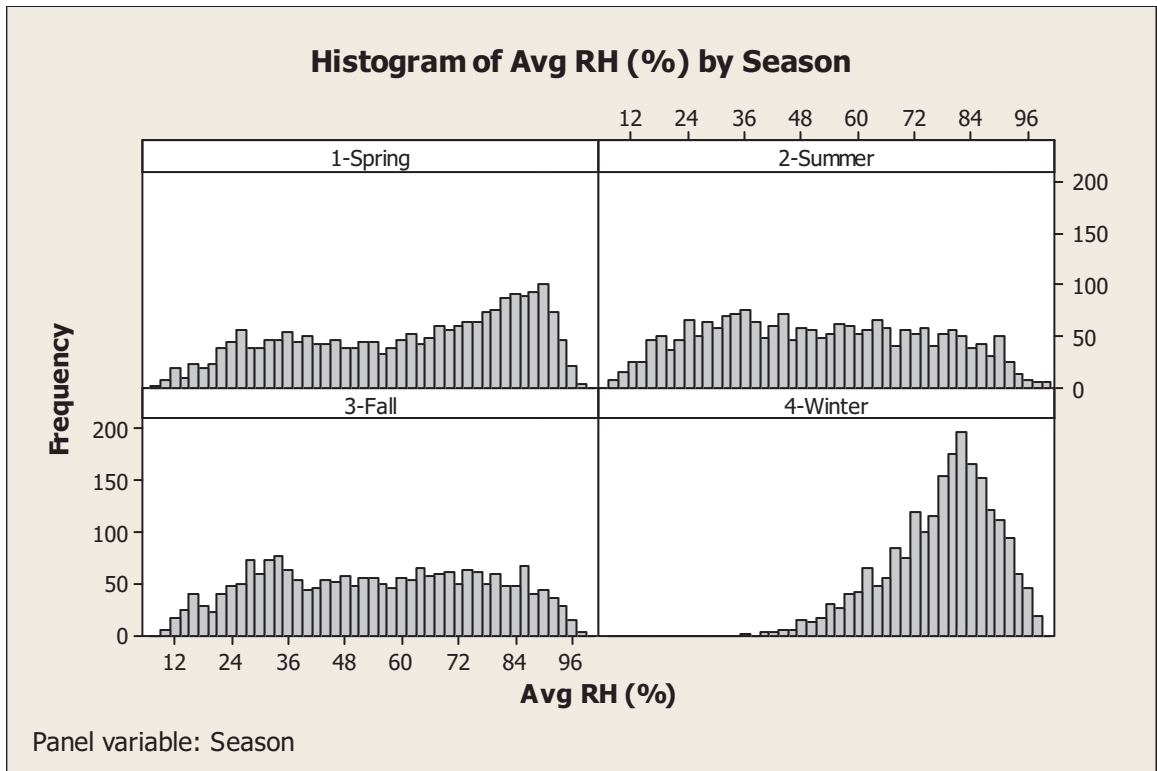
Variable	Month	N	N*	Mean	StDev	Minimum	Q1	Median	Q3	Maximum
Avg RH (%)	1	744	0	74.401	11.316	35.000	67.000	77.000	82.000	96.000
	2	696	0	76.204	12.055	39.000	69.000	78.000	86.000	97.000
	3	720	0	61.858	22.846	15.000	41.000	67.000	82.000	97.000
	4	720	0	55.276	26.033	8.000	31.250	56.500	80.750	95.000
	5	744	0	64.849	21.121	15.000	50.000	69.000	83.000	96.000
	6	720	0	57.286	21.158	13.000	38.000	58.000	76.000	96.000
	7	744	0	45.902	21.533	10.000	27.000	44.000	63.000	94.000
	8	744	0	49.981	23.951	7.000	30.000	49.000	69.000	99.000
	9	720	0	46.239	22.786	9.000	28.000	43.000	65.000	96.000
	10	744	0	59.480	22.502	9.000	40.000	61.000	79.000	97.000
	11	720	0	56.265	20.717	12.000	38.000	57.000	73.000	94.000
	12	744	0	80.942	9.595	46.000	76.000	82.000	87.000	98.000





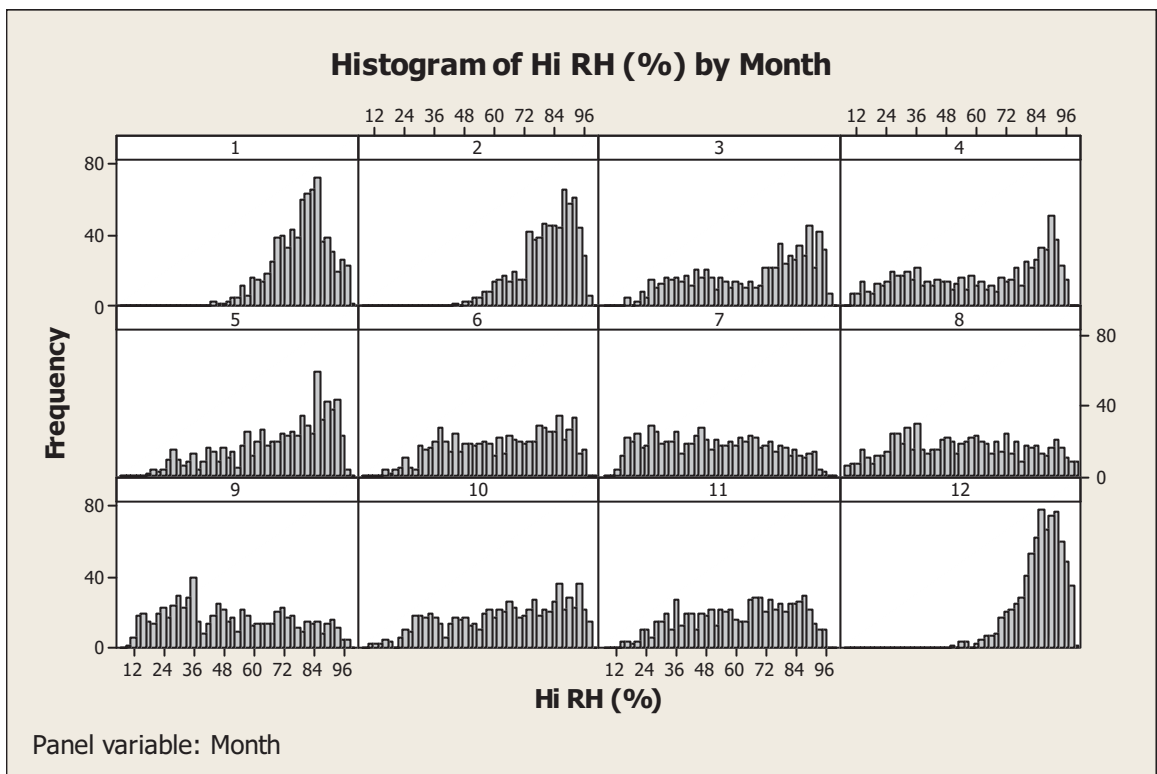
Descriptive Statistics: Avg RH (%)

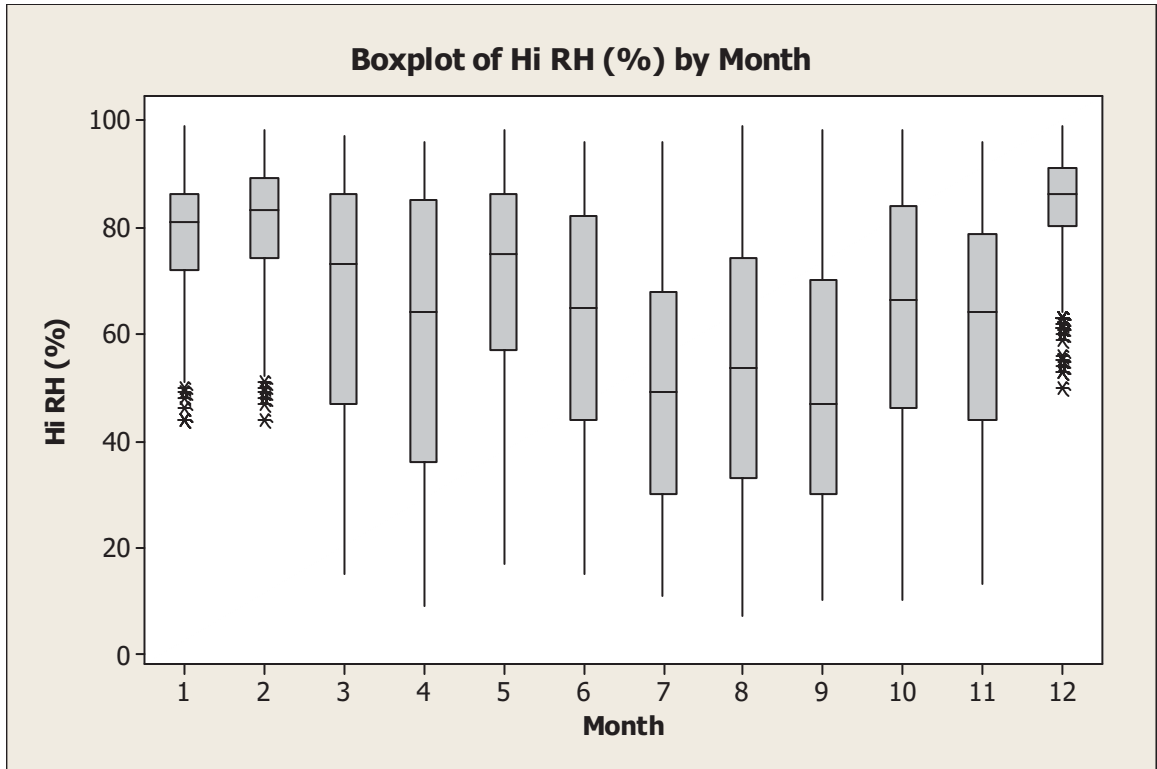
Variable	Season	N	N*	Mean	StDev	Minimum	Q1	Median	Q3
Maximum									
Avg RH (%)	1-Spring	2184	0	60.707	23.727	8.000	40.000	65.000	82.000
97.000									
99.000	2-Summer	2208	0	50.989	22.739	7.000	32.000	50.000	70.000
97.000	3-Fall	2184	0	54.055	22.726	9.000	34.000	54.000	73.000
98.000	4-Winter	2184	0	77.204	11.355	35.000	71.000	79.000	85.000



Descriptive Statistics: Hi RH (%)

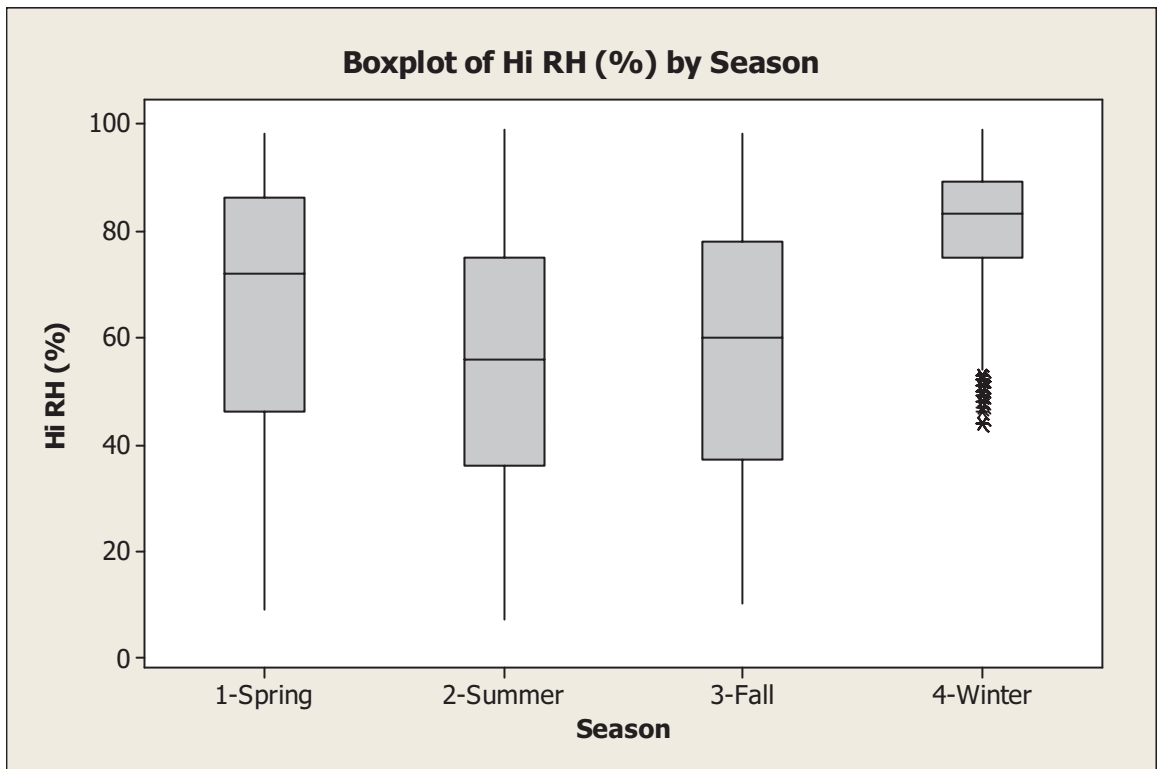
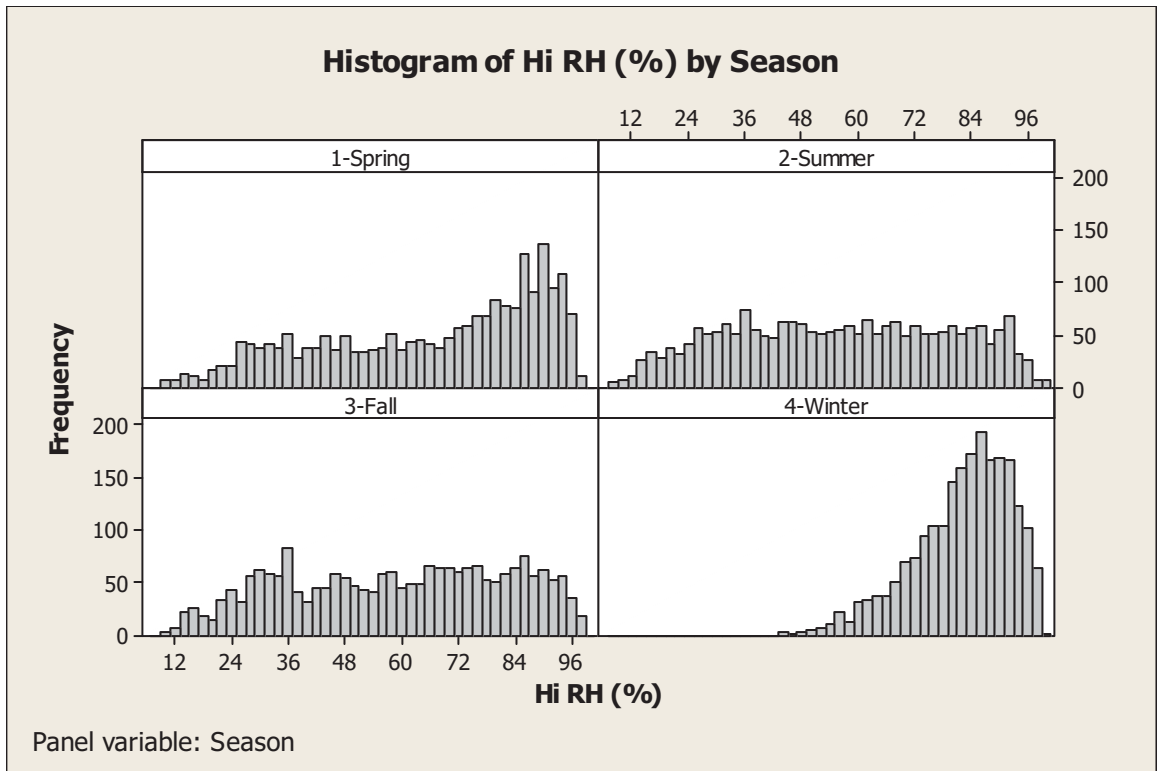
Variable	Month	N	N*	Mean	StDev	Minimum	Q1	Median	Q3	Maximum
Hi RH (%)	1	744	0	79.089	10.652	44.000	72.000	81.000	86.000	99.000
	2	696	0	80.704	10.902	44.000	74.000	83.000	89.000	98.000
	3	720	0	66.451	22.568	15.000	47.000	73.000	86.000	97.000
	4	720	0	60.206	26.101	9.000	36.000	64.000	85.000	96.000
	5	744	0	69.940	20.135	17.000	57.000	75.000	86.000	98.000
	6	720	0	62.814	21.013	15.000	44.000	65.000	82.000	96.000
	7	744	0	49.991	22.415	11.000	30.000	49.000	68.000	96.000
	8	744	0	53.909	24.419	7.000	33.000	53.500	74.000	99.000
	9	720	0	50.150	23.648	10.000	30.000	47.000	70.000	98.000
	10	744	0	63.888	22.670	10.000	46.000	66.500	84.000	98.000
	11	720	0	60.954	20.860	13.000	44.000	64.000	78.750	96.000
	12	744	0	84.997	8.711	50.000	80.000	86.000	91.000	99.000





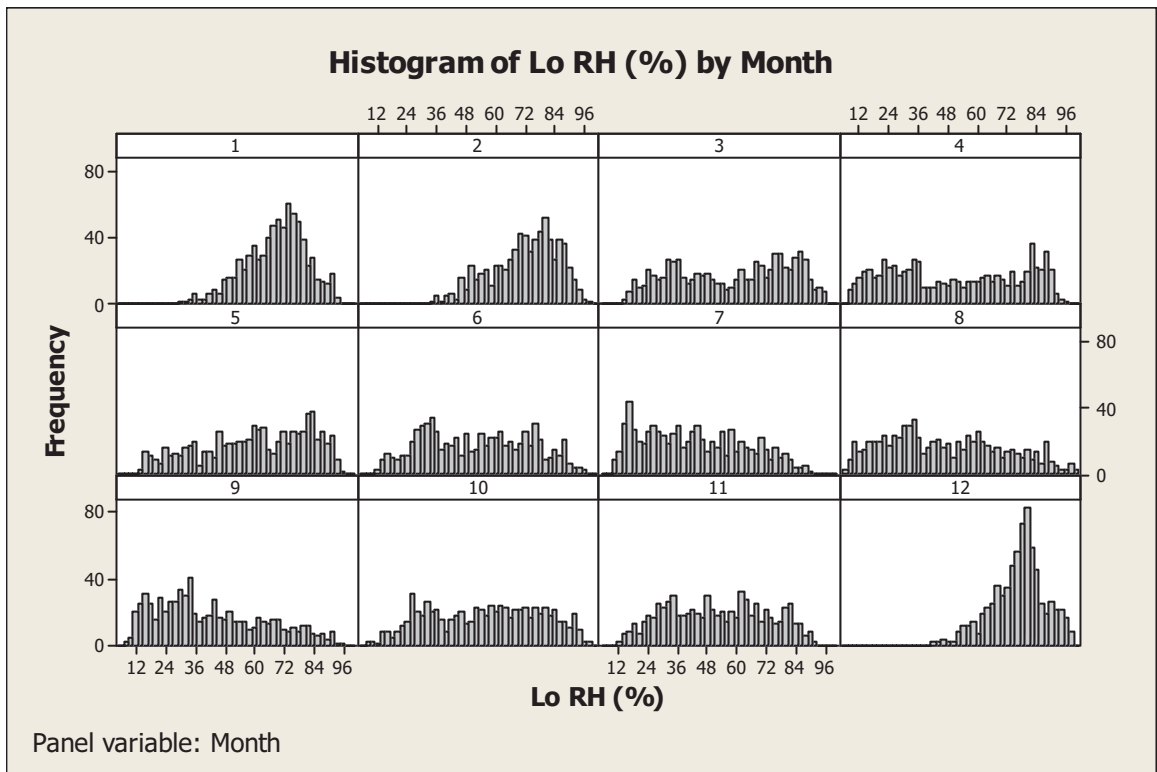
Descriptive Statistics: Hi RH (%)

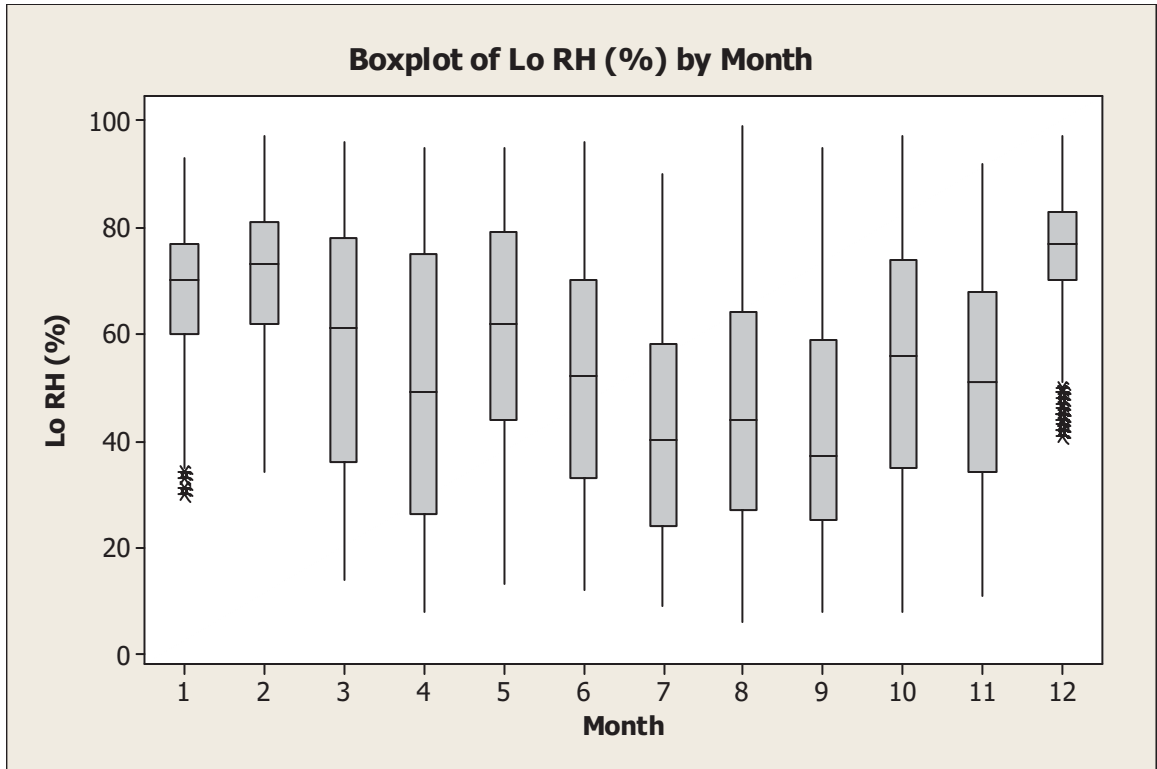
Variable	Season	N	N*	Mean	StDev	Minimum	Q1	Median	Q3	Maximum
Hi RH (%)	1-Spring	2184	0	65.581	23.375	9.000	46.000	72.000	86.000	98.000
	2-Summer	2208	0	55.492	23.286	7.000	36.000	56.000	75.000	99.000
	3-Fall	2184	0	58.392	23.180	10.000	37.000	60.000	78.000	98.000
	4-Winter	2184	0	81.616	10.422	44.000	75.000	83.000	89.000	99.000



Descriptive Statistics: Lo RH (%)

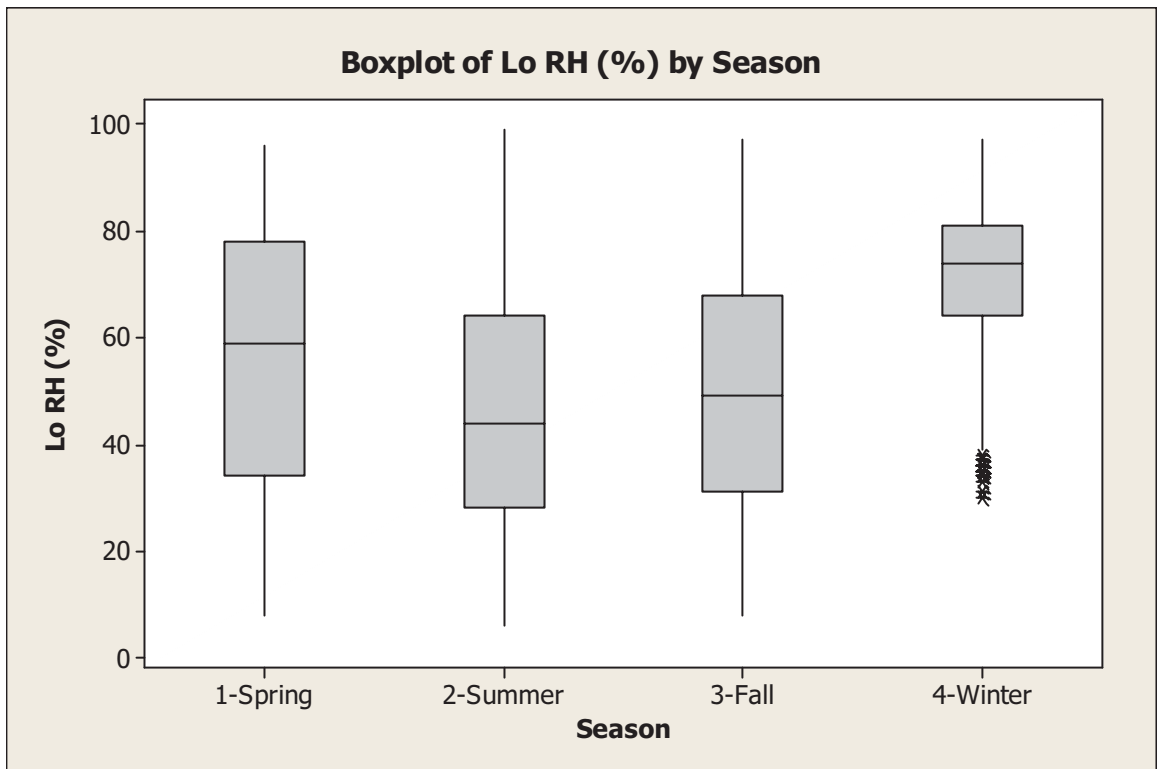
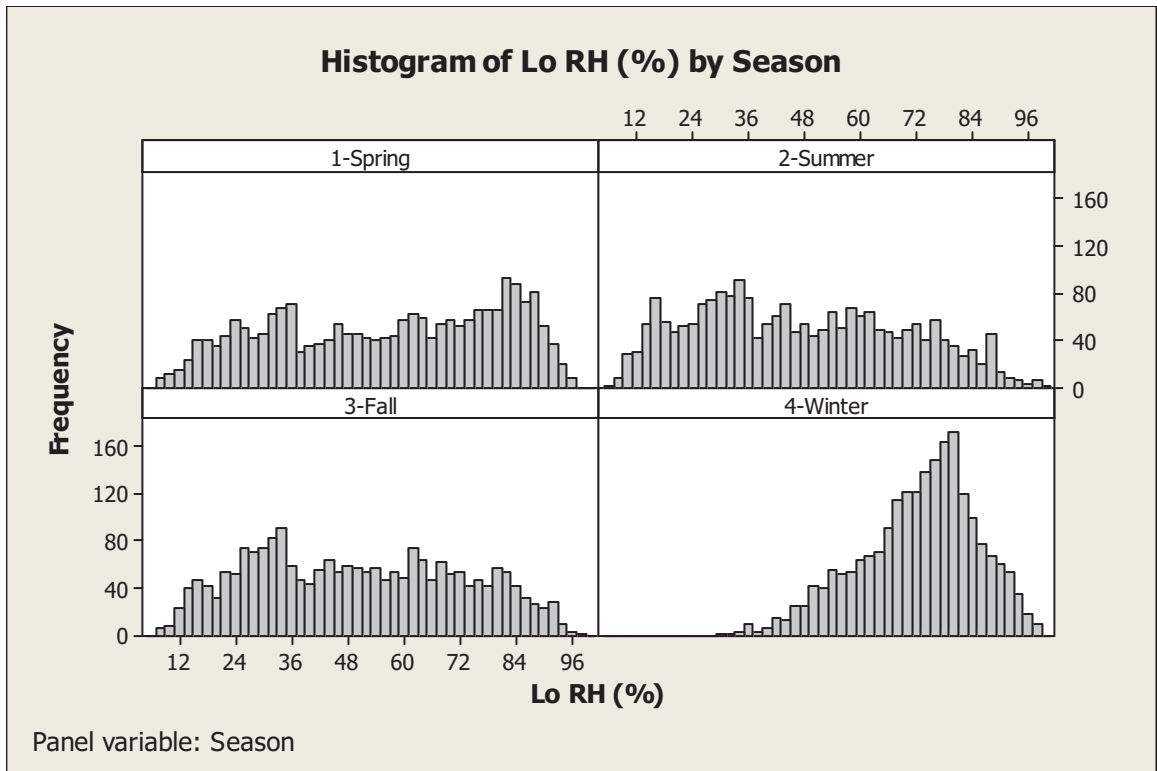
Variable	Month	N	N*	Mean	StDev	Minimum	Q1	Median	Q3	Maximum
Lo RH (%)	1	744	0	68.601	12.330	30.000	60.000	70.000	77.000	93.000
	2	696	0	71.119	13.476	34.000	62.000	73.000	81.000	97.000
	3	720	0	57.353	22.974	14.000	36.000	61.000	78.000	96.000
	4	720	0	50.326	25.874	8.000	26.250	49.000	75.000	95.000
	5	744	0	59.954	21.723	13.000	44.000	62.000	79.000	95.000
	6	720	0	51.854	21.077	12.000	33.000	52.000	70.000	96.000
	7	744	0	42.000	20.728	9.000	24.000	40.000	58.000	90.000
	8	744	0	45.991	23.599	6.000	27.000	44.000	64.000	99.000
	9	720	0	42.293	21.856	8.000	25.000	37.000	59.000	95.000
	10	744	0	54.921	22.251	8.000	35.000	56.000	74.000	97.000
	11	720	0	51.574	20.250	11.000	34.000	51.000	68.000	92.000
	12	744	0	75.931	11.041	41.000	70.000	77.000	83.000	97.000





Descriptive Statistics: Lo RH (%)

Variable	Season	N	N*	Mean	StDev	Minimum	Q1	Median	Q3	Maximum
Lo RH (%)	1-Spring	2184	0	55.923	23.906	8.000	34.000	59.000	78.000	96.000
	2-Summer	2208	0	46.558	22.206	6.000	28.000	44.000	64.000	99.000
	3-Fall	2184	0	49.654	22.123	8.000	31.000	49.000	68.000	97.000
	4-Winter	2184	0	71.901	12.669	30.000	64.000	74.000	81.000	97.000



Descriptive Statistics: Precip (Inches)

Variable	Month	N	N*	Sum	Maximum
Precip (Inches)	1	744	0	0.130000	0.050000
	2	696	0	0.210000	0.040000
	3	720	0	0.400000	0.130000
	4	720	0	0.980000	0.330000
	5	744	0	3.800000	0.710000
	6	720	0	1.770000	0.420000
	7	744	0	1.870000	0.460000
	8	744	0	0.870000	0.160000
	9	720	0	0.790000	0.140000
	10	744	0	1.230000	0.220000
	11	720	0	0.100000	0.050000
	12	744	0	0.270000	0.040000